

The Deep End

AUG 2016

Sink Your Teeth (Or Claws) Into Some New Floats!!



GREEN products are available at Pool Patrol.

Do your part to save the environment.

You get to save money at the same time!

Sign up for our digital newsletter for more info through our hyperlinks

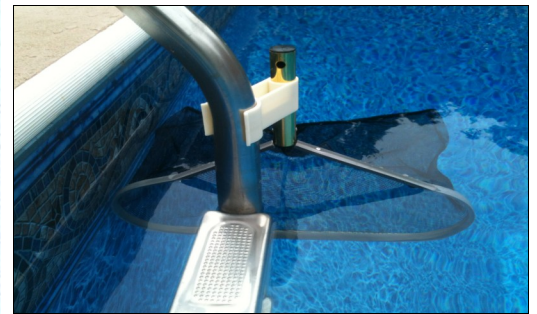
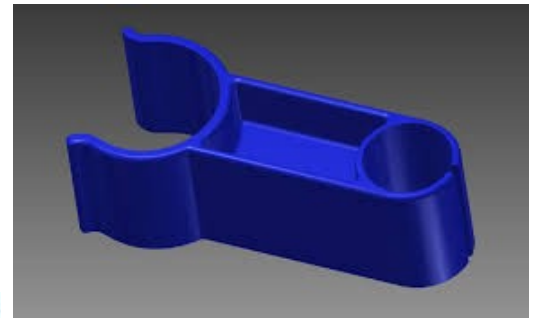
Speaking of saving \$\$\$, Check our ECayOnline Site for weekly specials!

Come see all the new floats from Swimline that have just arrived. We have largest selection on island, so we have one for you, too!



The new **LEAF BONE** is a patented, simple device to help keep your pool clean. Simply attach to ladder or rail and slide in a net. Now your pool will skim itself in between cleanings.

Only \$11.95! In stock now!



Summer Soak-A-Thon Is Back and Bigger and Better!



Our annual Summer Soak-A-Thon is back for 2016. This year we decided to go a little bigger and a little better.

Get your hydrotherapy tub this Summer and get:

- FREE delivery and installation = \$500
- FREE cover lifter = \$300
- FREE Color-matched Steps = \$225
- Total FREE Items = \$1025**



North Sound Plaza
North Sound Rd
George Town, Grand Cayman

Phone: 345-949-8543

Fax: 345-949-0762

Email: pools@poolpatrol.com

Visit our web site
www.poolpatrol.ky

Question Line

Q : I have a build up of yucky stuff right along the tile at the top of the water. What can I do to help with this?

A : Great question. That is what we in the industry call the "scum line." If you have this, you know exactly what we're talking about.

Much like the bathtub ring, or even "ring around the collar" on your shirts, it is a collection of grease, dirt, sweat, grime, etc. that is really quite unpleasant. There are

two different things we have that might help your situation.

First, we have something called a Scum Bug. It's a bug-shaped piece of material that you put in your skimmer, and it will help collect the nasty stuff that you don't want to touch or see.

Secondly, we stock a few different enzyme products in the store. We have a residential formula called UltraZyme by Lo-Chlor. For our commercial clients, we have a professional strength product called UltraZyme Pro. This is a stronger formulation item for those pools with heavier bather loads.

HAPPY SWIMMING!

Is It Time For An Enzyme??

Like most everyone else, you're wondering, "what the heck is an enzyme?" Let's take a little deeper look and find out.

The traditional pool care routine consists of a sanitizer to kill harmful bacteria, oxidizer to break down contaminants, algacide to control algae, and products to adjust pH and maintain water balance. In addition, pool owners routinely perform physical maintenance such as skimming, brushing, and vacuuming to remove debris and keep the pool looking sparkling clean.

Often included with this maintenance is removal of accumulations at the waterline. Oils, lotions, and other organic contaminants float on the surface of the pool water and collect dirt and debris. Over time, these contaminants accumulate along the wall surface at the waterline or in skimmers. Such physical maintenance is what consumes most of the time owners dedicate to taking care of their pool or spa.

Enzymes are proteins that speed up chemical reactions of other substances without being destroyed or altered. As a catalyst, enzymes perform the activity of accelerating the process of breaking down or combining specific materials.

Most enzymes are globular proteins, which consist of long chains of

amino acids that form a three dimensional structure resembling a balled-up telephone cord. They are highly specific, meaning an individual enzyme can only target a narrow range of compounds, referred to as the substrate. The twists and folds of the enzyme



form locations called activity sites, which define its specificity and provide the points where catalytic reactions occur.

In a pool or spa, the enzymes move freely through the water and agglomerate (collect) the oils, lotions, or other organic material. Once the enzyme encounters the material, it forms an enzyme/substrate complex. Upon completion of the reaction, the

products are released and the enzyme is free to perform the reaction again.

Often, pool enzymes are paired with other components, such as surfactants, that are used to help lift deposits from pool and spa surfaces. Surfactants consist of hydrophilic and hydrophobic components, meaning that one side has an affinity for water where the other side doesn't. Rather than being attracted to water, the hydrophobic parts are typically attracted to oils. The "oil-loving" tails attach to the greases and oils that build up on surfaces, and the "water-loving" heads help lift them off the surface.

Once in the water, the oils interact with the enzymes and break down into smaller pieces. It is this tandem effort of both the enzymes and the surfactants that allows for the removal of pool contaminants.

For pool owners, determining when to use an enzyme is usually rather easy. Pools and spas that experience a large amount of organic contamination, exhibit higher bather loads, or have bathers who routinely enter the pool or spa before showering are good candidates. Those vessels often accumulate the notorious waterline that is so frustrating to remove.
